

The Leaders in
Warehouse
Management Technology



SYNERGY™

An efficient and effective warehouse lies at the heart of any **successful fulfillment operation.**

The way people shop is evolving at a faster pace than ever before. The traditional main street model is disappearing as time-pressed consumers look for faster and more convenient ways of getting hold of their purchases.

In order to be effective, a warehouse must be able to adapt to the changing needs of a market. But all too often, the cost of change is prohibitive. Traditional warehouse management solutions can be time-consuming and expensive to set in motion and just as difficult to reconfigure once established.

Synergy is defining a new era of efficiency, aimed at lifting warehouse management out of the dark ages.

Synergy Logistics has been recognized in the Gartner® Magic Quadrant™ for warehouse management systems (WMS) for several years, for our completeness of vision and ability to execute.

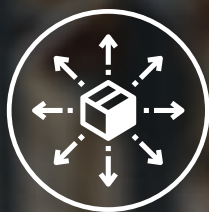


SnapFulfil is a cloud-based, Tier 1 warehouse management system **with flexibility at its core.**

It delivers cutting-edge technology at a fraction of the cost of traditional installations and, unlike other warehouse management systems, is quick and easy to implement, giving you a rapid return on investment. Once up and running, SnapFulfil is highly configurable and can adapt to meet evolving fulfillment demands.



Highly configurable



Rapid deployment in 45 days or less



Affordable with capex & leasing options



Service level & peak demand management



Pay for extra users only when you need them



Can be up and running in minutes



Fully scalable & flexible solution



Increased picking & shipping accuracy

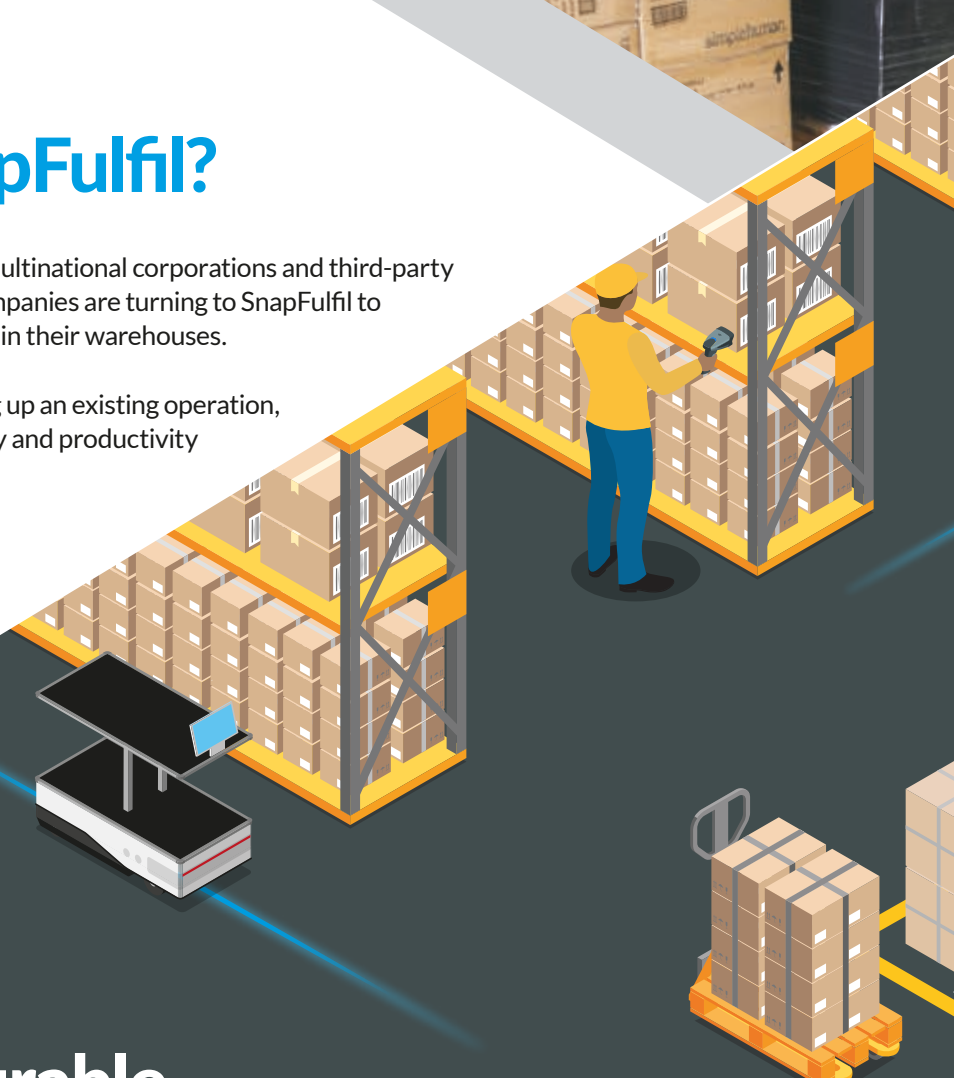
“SnapFulfil’s **best-of-breed functionality** has driven the introduction of best practices, giving our partners and customers **complete confidence** in our ability to deliver on our promises.”

Topps

Why choose SnapFulfil?

From fast-growing e-commerce startups to multinational corporations and third-party logistics providers (3PLs), more and more companies are turning to SnapFulfil to optimize inventory, space, and resources within their warehouses.

Whether firing up a new warehouse or tuning up an existing operation, SnapFulfil can dramatically improve efficiency and productivity by between 15% and 30%.



✓ Fast & configurable

SnapFulfil is a market-leading product without the hefty price tag and long, painful implementation process often associated with a Tier 1 WMS. Our proven, repeatable implementation process and in-house expertise enable us to deploy in 45 days or less.

Configurability is at the heart of our WMS, which is capable of adapting key optimization principles to meet specific operational and space requirements. It uses location, receiving, shipping, and inventory data to determine an optimal warehouse layout, manage travel times, and further optimize operational efficiency. It can also alleviate reverse logistics burdens, helping efficiently process, handle, and place return stock.

✓ Scalable solution

Our cloud-based solution has the flexibility to support the ebbs and flows of business as well as handle complex multi-site rollouts. SnapFulfil is engineered to scale in line with evolving business requirements, avoiding the need for expensive system upgrades. Licenses can also be temporarily added for peak trading times.

✓ Support options

We offer a wide range of product support options, including 24/7 critical coverage and flexible service level agreements (SLAs), to ensure customer service is tailored to the business model of each customer.

Integrating telephone, live chat, an online portal, and a self-service knowledge base, our service desk team consistently performs well above industry standards in independent testing, achieving an average first response time of under an hour.



Fast, flexible, configurable

Key benefits of SnapFulfil include:

- Improved space utilization
- Sophisticated warehouse control for resources
- Improved visibility, auditability, & traceability of every movement – stock and people
- Optimized picking for shortest travel distances
- Automatic replenishment for optimal product availability
- Simple parcel labeling with no need for manual data entry
- Automatic prioritization and allocation of tasks to efficiently meet operational goals
- Real-time communication with operators anywhere in the warehouse
- Reconciliation of receipts vs. orders for effective financial management
- System-directed put-away for optimized stock location
- Streamlined returns handling
- Improved customer service
- Multi-owner options for multi-channel and 3PL operations
- Simple reporting of operator performance for management and training
- ‘At a glance’ visibility of warehouse performance against KPIs in real-time
- Easy access to historical data
- Accessible from any smart mobile device
- Supports accurate resource planning and data-driven decision making
- Flex up and down in line with seasonal fluctuations
- Rapid return on investment
- Low total cost of ownership
- Rapid disaster recovery built in as standard
- Scalable solution for 1-1,000+ users



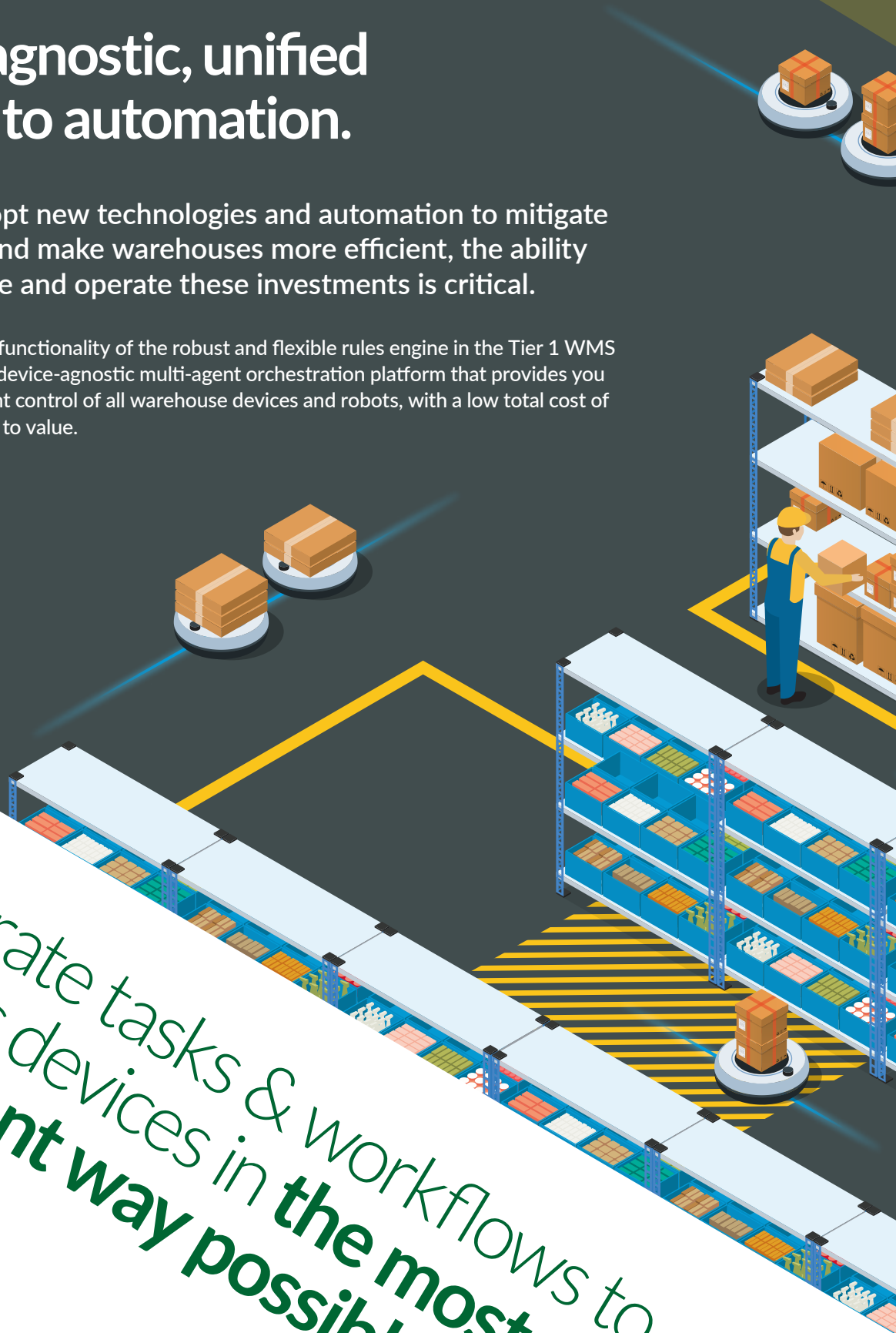
SNAPCONTROL™

A device agnostic, unified approach to automation.

As businesses adopt new technologies and automation to mitigate labor challenges and make warehouses more efficient, the ability to rapidly integrate and operate these investments is critical.

SnapControl extends the functionality of the robust and flexible rules engine in the Tier 1 WMS solution SnapFulfil. It is a device-agnostic multi-agent orchestration platform that provides you with seamless and efficient control of all warehouse devices and robots, with a low total cost of ownership and rapid time to value.

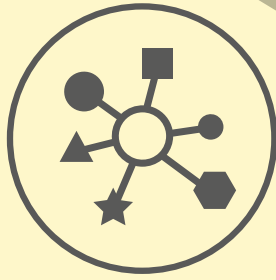
Orchestrate tasks & workflows to
robotic devices in **the most**
efficient way possible.



Warehouse automation in **60-90 days**



**Quickly add new devices
to your warehouse**



**Connect to all types
of devices & systems**



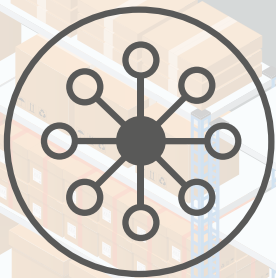
**Automatically allocate
or reassign tasks**



**Create buffers for
delaying tasks &
manage exceptions**



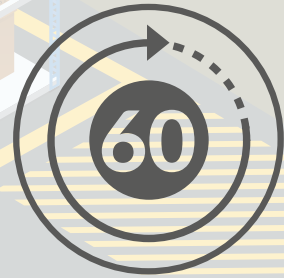
**Real-time device
switchover**



**Fully scalable &
flexible solution**



**Prioritize inbound,
outbound & replenishment**



**Implement an integrated
solution in 60-90 days**



SNAPDATA™

Data and Analytics

Amalgamate data from various sources and locations in to one central dashboard.

Powered by Tableau, SnapFulfil's data and analytics tool can manipulate stored information and client data to generate business performance metrics. No need to worry about hosting, SQL Enterprise licensing, or analytics engine administration – we manage all of this, and it's all included in a fixed monthly cost.

Features and benefits:

- Analytics & reporting as a service (ARaaS)
- Access to live SnapFulfil data via a replicated database
- No need to have any DBA knowledge
- Access to SnapFulfil support during business hours
- Access to a number of pre-configured reports, KPIs, and a holistic view of the operations' inventory and resources
- Visualize your operational KPIs

Key Performance Indicators

The system can be configured to display a KPI dashboard, giving top-level information, such as operational performance, tailored to the needs of senior managers and directors.

The KPI report can then be drilled down into further, granular reports for other managers in the business, such as shipping reports, warehouse heatmaps, and picking performance.





“Implementing SnapFulfil has radically **improved both accuracy and operational efficiency** which allows us to offer an excellent service to all of our customers – internal and external – as standard.”

Comfy Quilts





SYNERGY™

SnapFulfil, SnapControl and SnapData were developed by Synergy Logistics, specialists in warehouse management technology and solutions.

Synergy was one of the first companies to recognize the potential of cloud technology as a platform for a best-of-breed warehouse management system. SnapFulfil was architected for the web in 2007 and is now used in warehouses across the globe.

Synergy employs some of the industry's top talent and believes that to stand still is to move backward. The company has a commitment to innovation and problem-solving, continually developing new solutions to meet customer demands.

Security

Synergy's mirrored server arrays are hosted in two physically separate, secure environments to provide disaster recovery as standard. Both are restricted-access, state-of-the-art, high-availability ISO 27001 certified data center facilities. The company provides dedicated, secure primary and secondary connections to the internet, with fail-safe precautions in case of primary connection failure.

System access is controlled by encrypted login credentials and unique session identification, to ensure that only authorized people can log in. All information transmitted and received is securely encrypted, and we utilize the latest in virtual machines and 128-bit database encryption to offer complete peace of mind.

Infrastructure

With SnapFulfil's cloud WMS, users can benefit from a large-scale, virtualized data center, with hundreds of processor cores, 24-hour security, diesel power generator backup, and load balancing business servers.

Integration

SnapFulfil offers a wide range of integration options including flat file, XML, and our web API. We integrate with a wide range of enterprise applications and systems including NetSuite, Oracle, SAP, and SAGE, along with most major US parcel carriers.



Pricing - affordable & flexible options

Transparent pricing

Unlike many of our competitors, we are fully transparent about our pricing. For customers looking to fix their costs for a set period, we can offer a custom package and will never attempt to introduce additional costs through the back door.

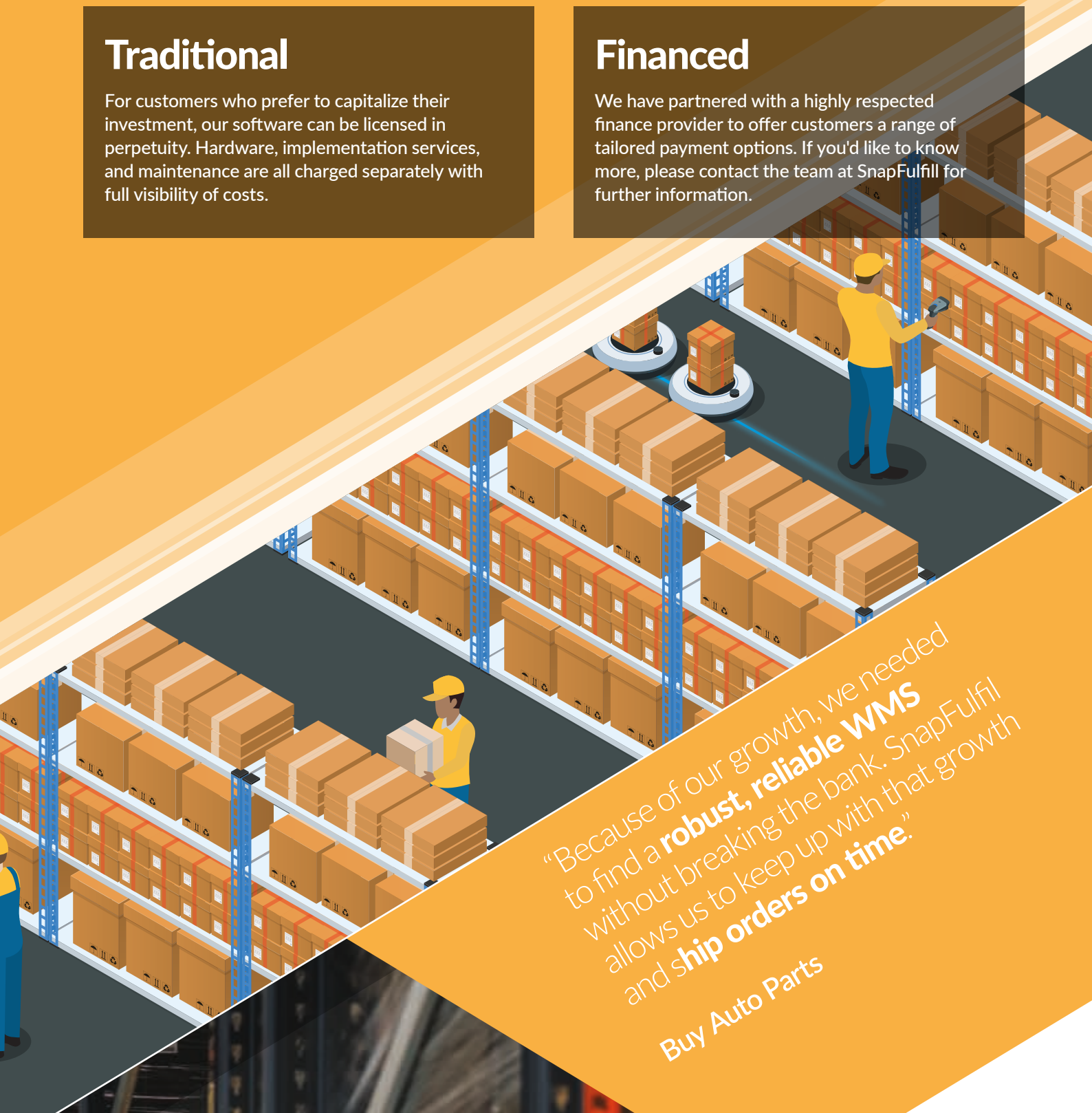
SnapFulfil is available as a subscription service, based on the number of users. We offer a choice of two payment options:

Traditional

For customers who prefer to capitalize their investment, our software can be licensed in perpetuity. Hardware, implementation services, and maintenance are all charged separately with full visibility of costs.

Financed

We have partnered with a highly respected finance provider to offer customers a range of tailored payment options. If you'd like to know more, please contact the team at SnapFulfil for further information.



“Because of our growth, we needed to find a **robust, reliable WMS** without breaking the bank. SnapFulfil allows us to keep up with that growth and **ship orders on time.**”

Buy Auto Parts

How do I get **SnapFulfil** in my warehouse?

We have a dedicated team of engineers and support staff who are experts in making warehouses more efficient and profitable. If you like what you've read, and you'd like us to conduct a **free, no obligation demonstration**, please contact us:

info@snapfulfil.com

720 372 1250



Gartner does not endorse any vendor, product or service depicted in its research publications, and does not advise technology users to select only those vendors with the highest ratings or other designation. Gartner research publications consist of the opinions of Gartner's research organization and should not be construed as statements of fact. Gartner disclaims all warranties, expressed or implied, with respect to this research, including any warranties of merchantability or fitness for a particular purpose. GARTNER and MAGIC QUADRANT are registered trademarks of Gartner, Inc. and/or its affiliates in the U.S. and internationally and is used herein with permission. All rights reserved.

SNAPFULFIL.COM

